

Machine Model:	EMMEGI PHANTOMATIC X6	Origin:	ITALY
Description:	4 AXES CNC MACHINING CENTER		



The **"PHANTOMATIC X6"** is a 4 axes CNC Machining Centre able to work **5 profiles faces**: front, top, rear faces and right & left end of the profile.

Profiles positioning:

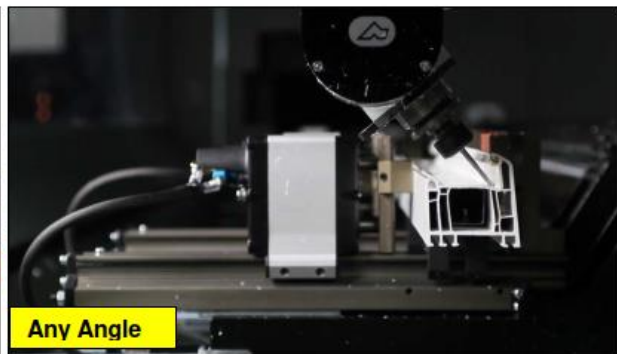
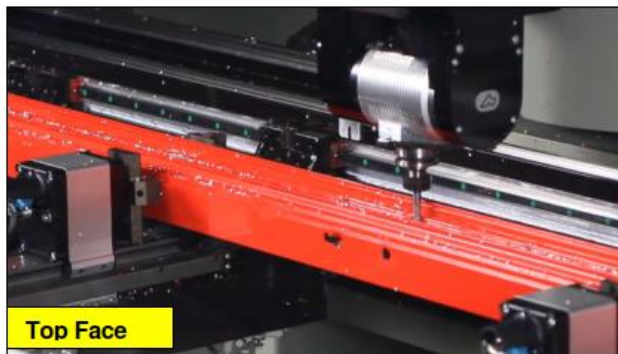
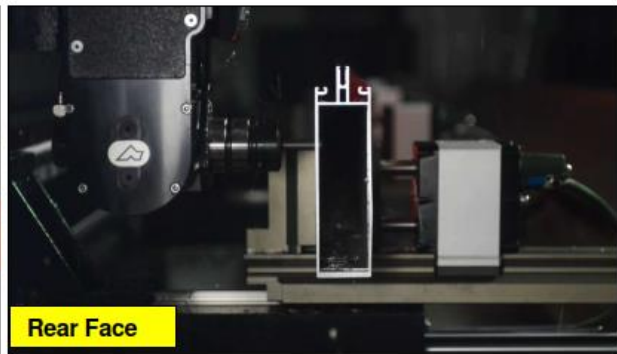
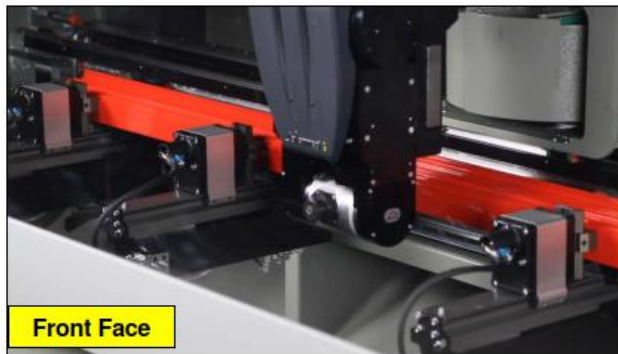
It is equipped with n. **2 PNEUMATIC driven drop-away reference stops**, one located on the **left side** of the machine and **located on the right side of the machine**. This allows the operator to lay against the relevant reference stops either **one** or **two profiles**; the **2 profiles** can be of different sections, lengths and machining.



Left area open for loading & Right closed for



Left area closed for working & Right open for loading



“PHANTOMATIC X6” – It is possible to work any intermediate angle from 0° to 180°



“PHANTOMATIC X6” – With the blade of 180 mm it is possible make notching/end milling at 90°

With the “PHANTOMATIC X6” it is possible to operate on the following modes:

Working in MULTIPIECES MODE:

- a) Loading a single piece up to 7.700 mm and complete the machining in one cycle;



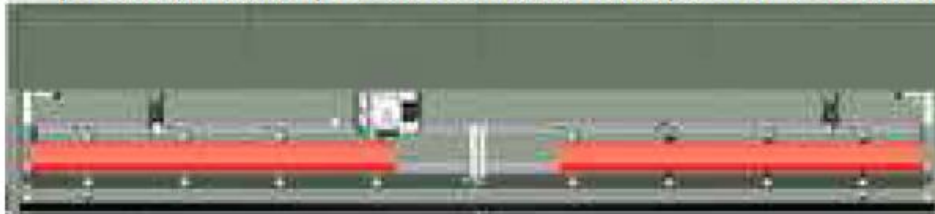
Longer piece than 7.700 mm can also be completed in two working cycles (in first cycle the piece will be referred to the left stop and in second cycle the piece will be referred to the right reference stop);

- b) Loading in multipiece mode 2 different pieces having a total length of less than 7.700 mm (one referred at left side and one at right side reference stops) and machining both in one working cycle.



Working in PENDULAR MODE

- c) Loading on the left half of the machine 1 pieces and start to work its. Meanwhile the machine works this piece on the right half of the machine, if clamps are in the right position, it will be possible to load the next piece to be worked.



Axis travel:

- X (longitudinal axis) : 7.700 mm
- Y (transversal axis) : 270 mm + 250 mm
- Z (vertical axis) : 420 mm
- A (rotation) : 0° – 180° any intermediate angle

Positioning speed:

- X : 75 m/min
- Y : 22 m/min
- Z : 22 m/min
- A : 4.500 degrees/min

Electrical spindle characteristics :

- Power : 7 kW (S1)
- Speed : variable from 500 to 16.500 rpm
- Collet chuck : HSK – 50 F
- Automatic tool change



Automatic tool store

The "PHANTOMATIC X6" is equipped with a **8 positions** revolving tool magazine **incorporated underneath the spindle structure.**

The 8 available slots can be occupied as follows:

- Up to 8 HSK 50F collets chucks;
- Up to 1 Blade holder with blade Ø 180 mm;
- Up to 1 Two-way angular tool (typically used to work the end of the profile),

Tools lubrication:

The "PHANTOMATIC X6" is provided with a LUBRICA pure oil coolant system, complete with directional nozzles to ensure the proper lubrication.

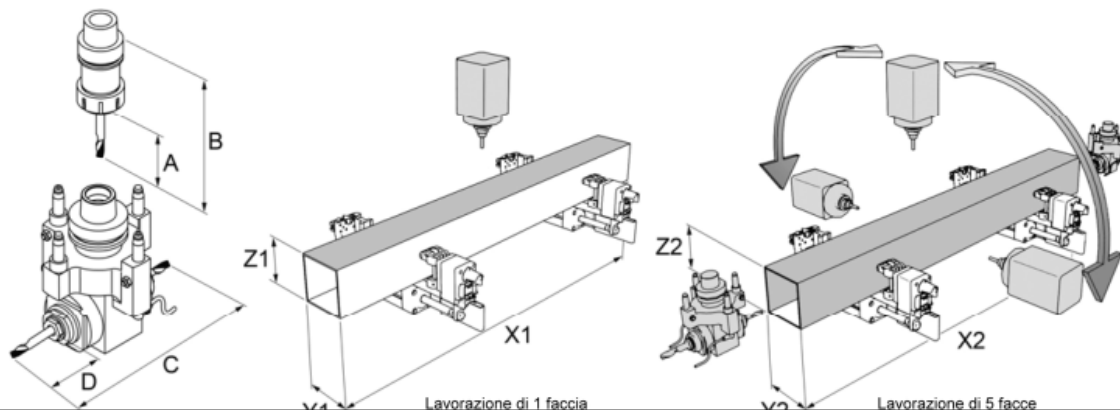
Profiles' machining range:

- Max. cross section that can be processed on **TOP FACE**:
H=250 mm x W=210 mm;
 - Max. cross section that can be processed **3 FACES (BACK, TOP, FRONT)**:
H=250 mm x W=180 mm;
 - Max length that can be processed: **7.320 mm (3 faces)**; **7.080 mm (5 faces)**
- The above values are calculated considering a COLLET CHUCK + TOOL length of 102 mm.**

descrizione e caratteristiche description and characteristics

CAMPO DI LAVORO

WORK CAPACITY



Dimensions /mm	A	B	C	D	X1	Y1	Z1	X 2	Y2	Z2
PHANTOMATIC X6 (3 faces)	45	102	232	45,5	7700	210	250	-	-	-
PHANTOMATIC X6 (5 faces)	45	102	232	45,5	-	-	-	7460	180	250

Automatic clamps positioning:

The clamps are automatically positioned on the X-axis by means of an aggregate pneumatic device installed on the spindle head.

The software of the "PHANTOMATIC X6" is calculating the ideal positions of each clamps based on the machining to be carried out on each piece.

For security reasons before starting the machining process each clamp position is checked automatically by a sensor fitted on the spindle head.

As standard the PHANTOMATIC X6 is completed with 8 clamps; additional clamps can be added optionally.



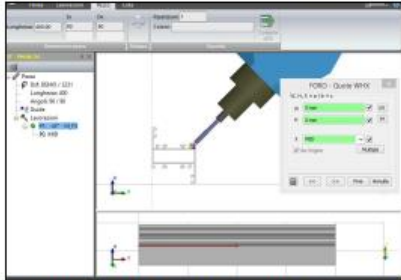
Full guarding system:

The "Phantomatic X6" machining centre has a physical protective guard, which totally protects the operator and contributes to reduce the noise level.

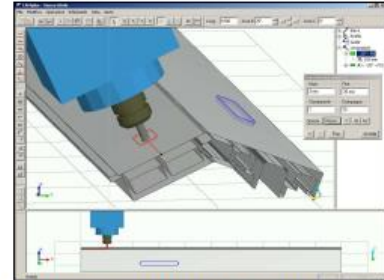
The protection allows however an easy and quick access to the support clamps for the profile loading / unloading and a practical access to the machine's back in case of any eventual maintenance request.

Machine's programming:

The "Phantomatic X6" is quickly and easily programmable, thanks to a special software package developed by Emmegi. Such software, operating in Microsoft® Windows® Embedded environment, is one of the most important features of our working centre, allowing the operator to program the machining in a simple and intuitive way.



"bidiCAM" – Standard programme



"CAM PLUS" – Optional programme

Control unit:

- CNC-PC with processor I3 (dual core) with the following characteristics: 15" LCD-TFT graphic colour touch screen, keyboard, 4 Gbyte RAM memory, USB port, 64 Gbyte SSD, network card type RJ45.
- Electrical control cabinet with ventilation system;
- Operative system: Microsoft ® Windows ® Embedded;
- Machine's software packages (fully developed by EMMEGI) included: bidiCAM, DRILL.



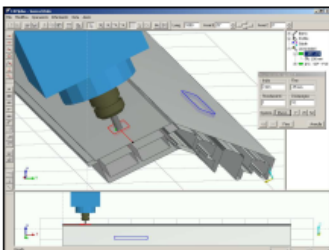
MG PILOT – Handy Remote Control



Control Board with touch screen

“PHANTOMATIC X6” – Configuration & options included in the supply

Description
“PHANTOMATIC X6” with automatic tools store of 8 positions, 8 automatic positioning clamps , 2 pneumatic driven reference stops, 2 security tunnels for extra length piece.
OPTIONS INCLUDED IN THE SCOPE OF SUPPLY:
n. 1 Electrical board and NC air conditioner for operating temperatures < 50°C
Collet/collet chuck:
n. 1 Blade holder HSK 50 F for blade
n. 1 Blade Ø 180 mm
n. 6 Collet chuck HSK 50 F – ER25
n. 6 Collet ER 25 (Ø 3-4, 4-5, 5-6, 6-7, 7-8, 9-10 mm)
n. 2 Solid carbide single-flute Tool of Ø 3 mm
n. 2 Solid carbide single-flute Tool of Ø 4 mm
n. 2 Solid carbide single-flute Tool of Ø 5 mm
n. 2 Solid carbide single-flute Tool of Ø 6 mm
n. 2 Solid carbide single-flute Tool of Ø 8 mm
n. 2 Solid carbide single-flute Tool of Ø 10 mm
Optional software included
n. 1 “CAM PLUS” software for 3 D view programming



“CAM-PLUS” – 3 D programming vision